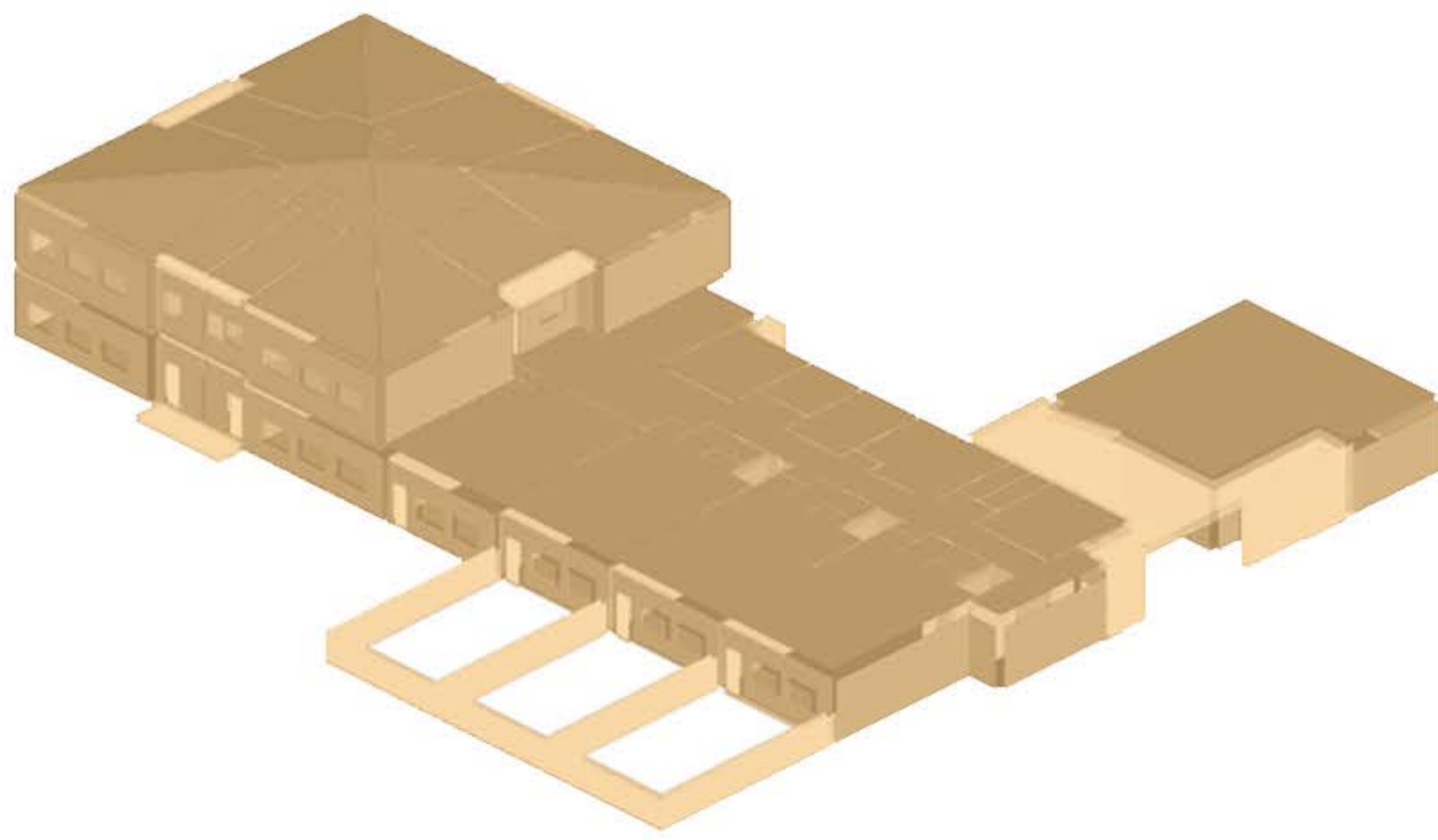
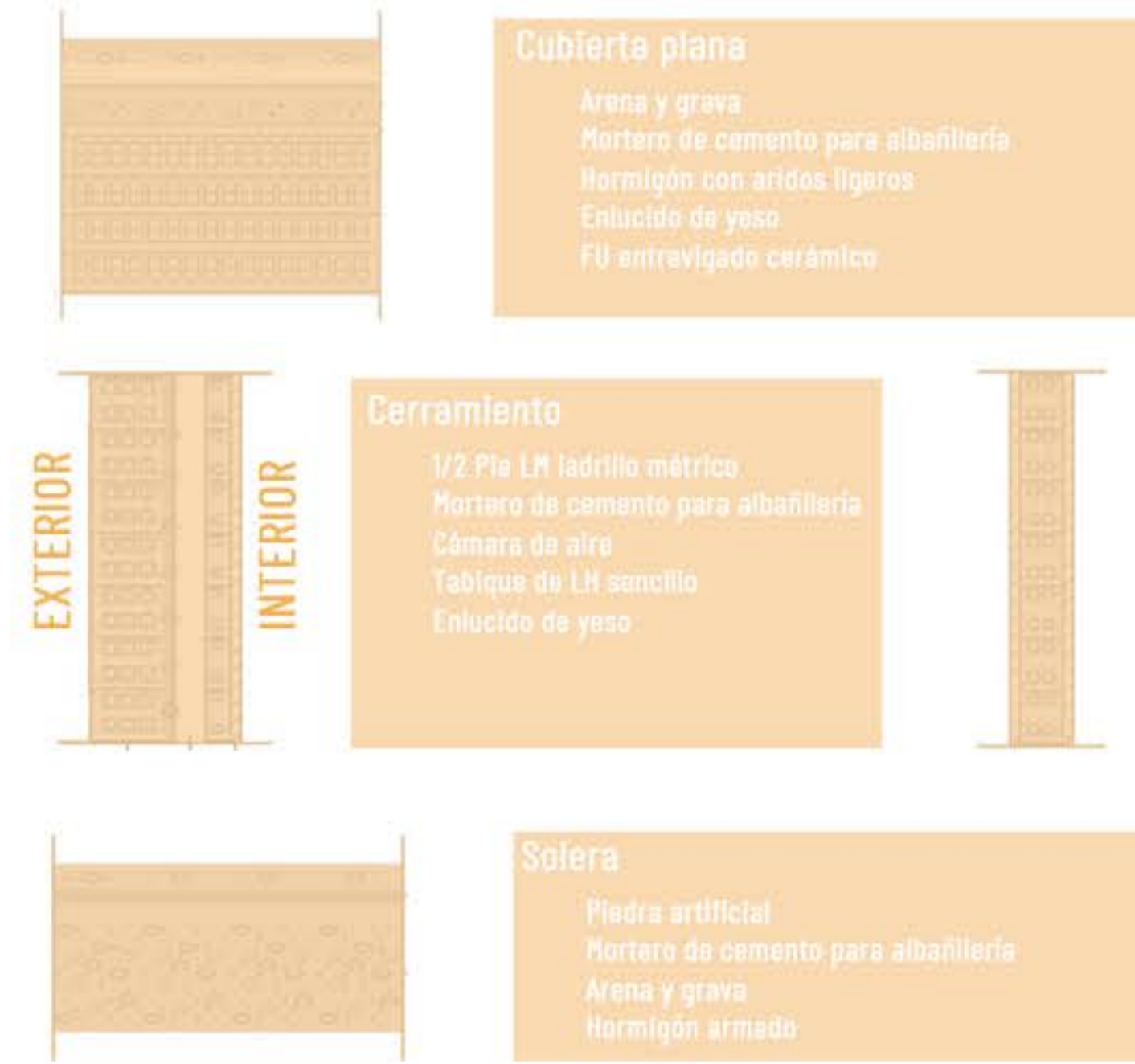


C. Virgen de los Desamparados, 41701 Dos Hermanas, Sevilla

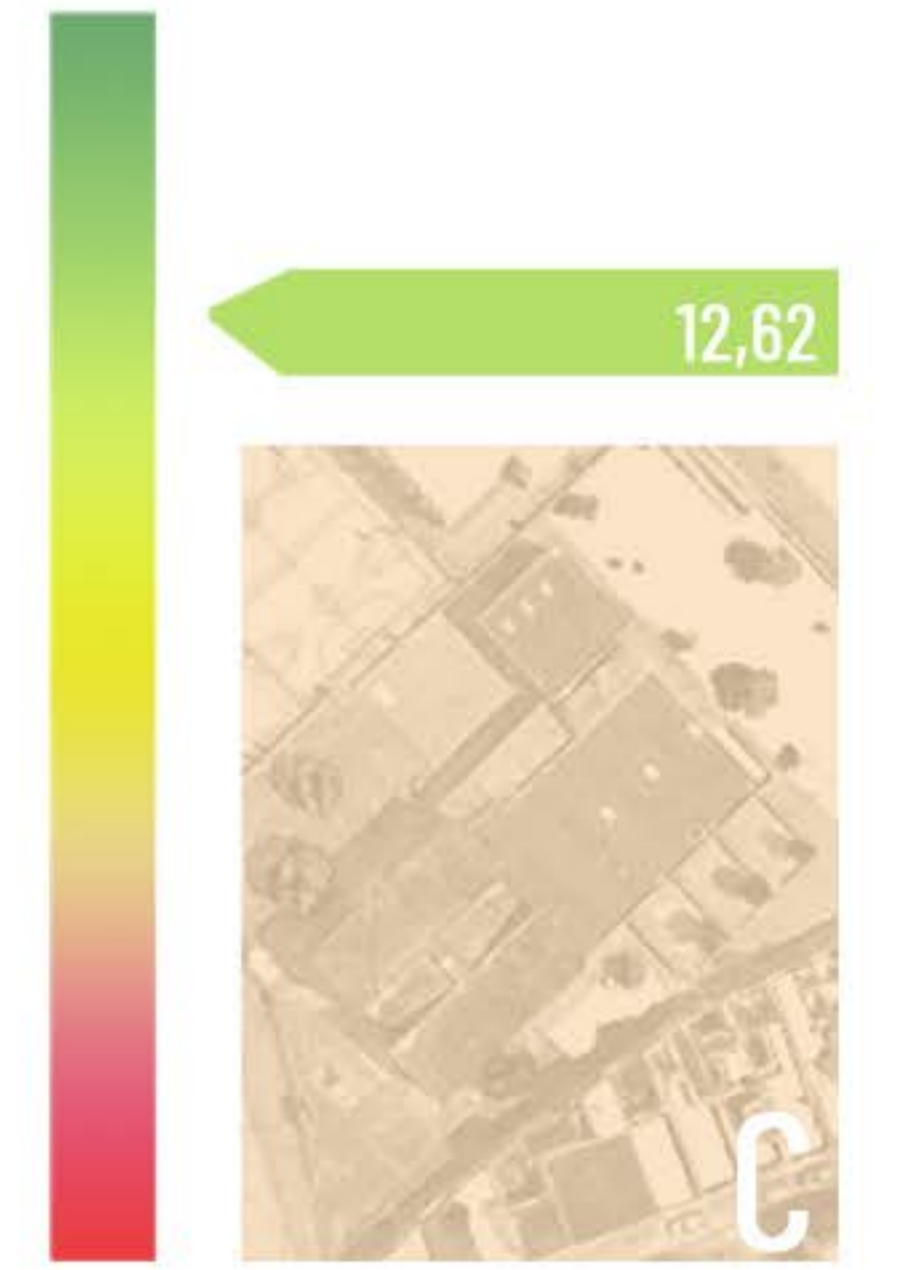
ESTADO ACTUAL



MODELO IFC DE CÁLCULO

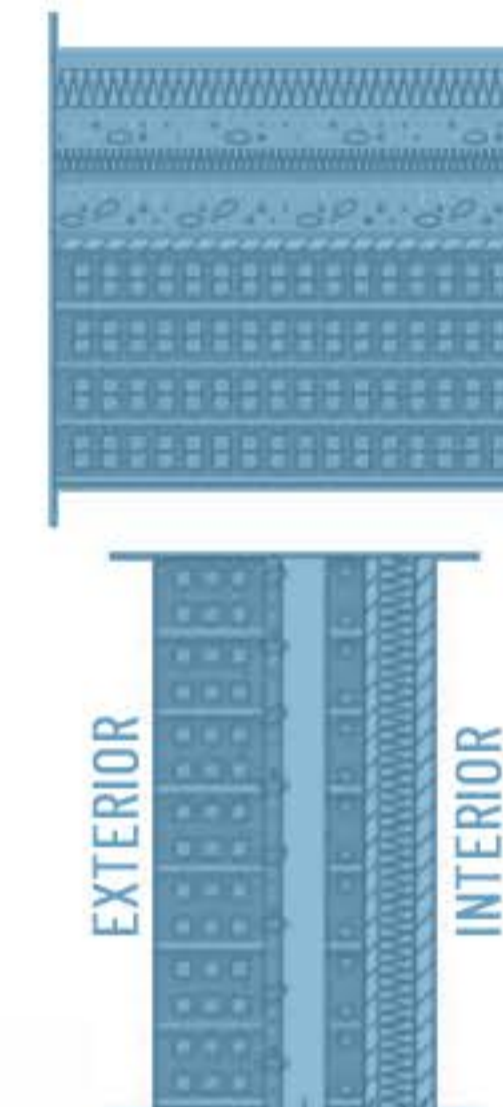
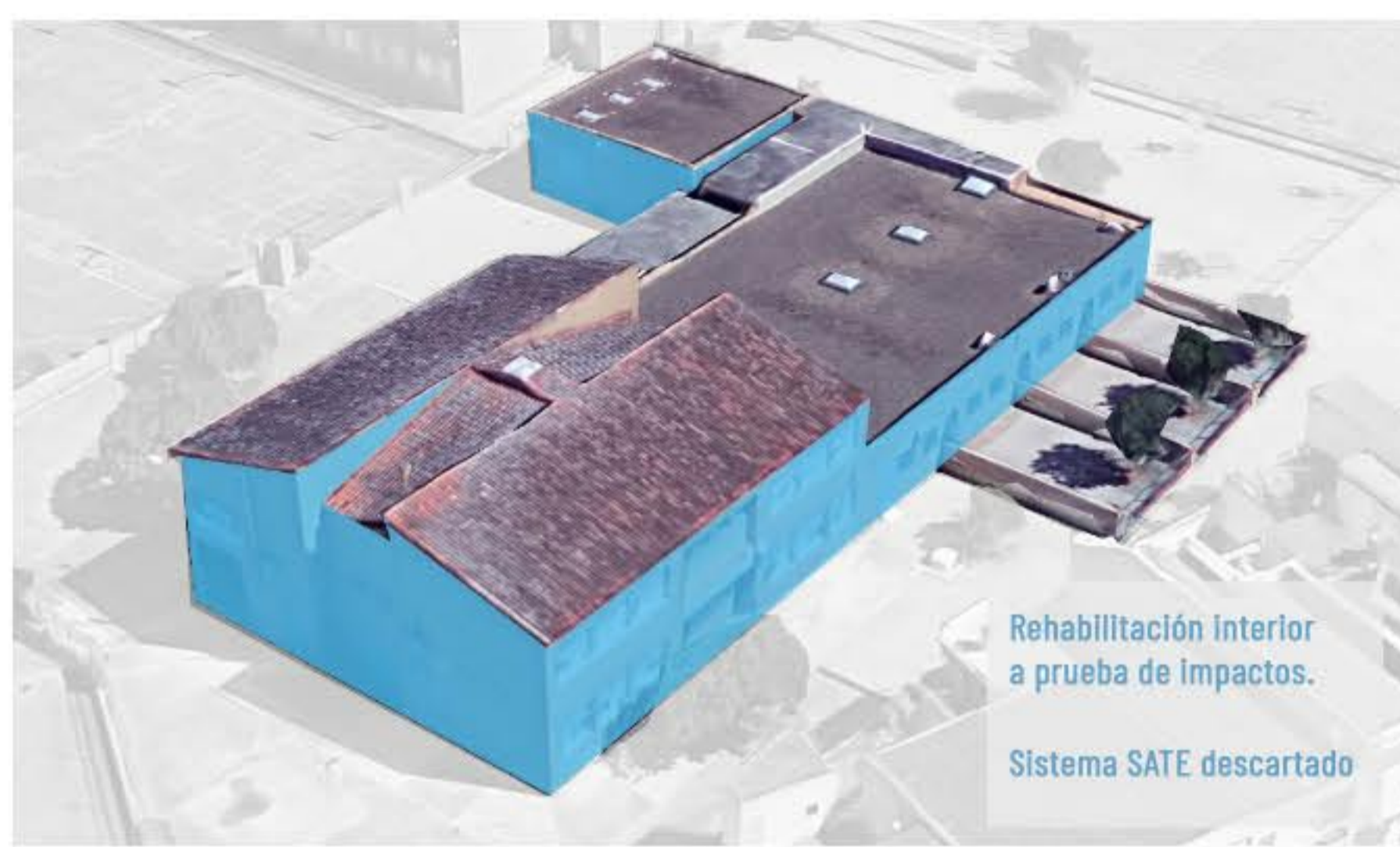


SOLUCIONES CONSTRUCTIVAS ESTADO ACTUAL



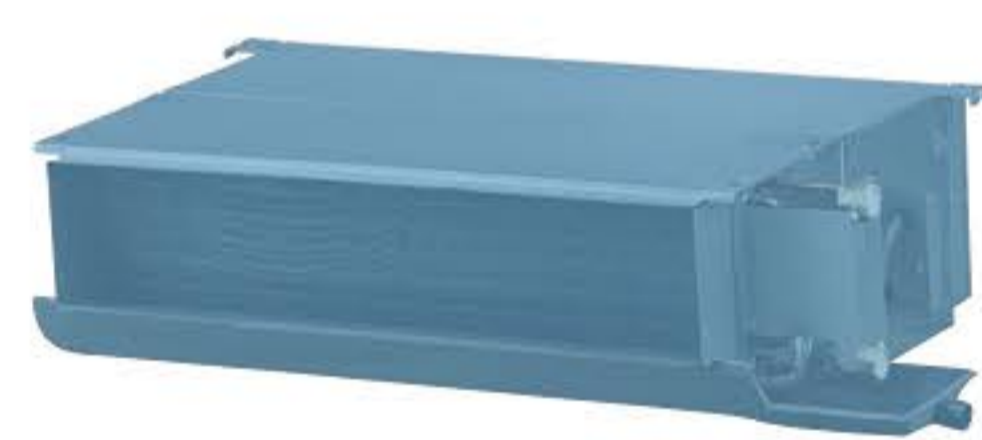
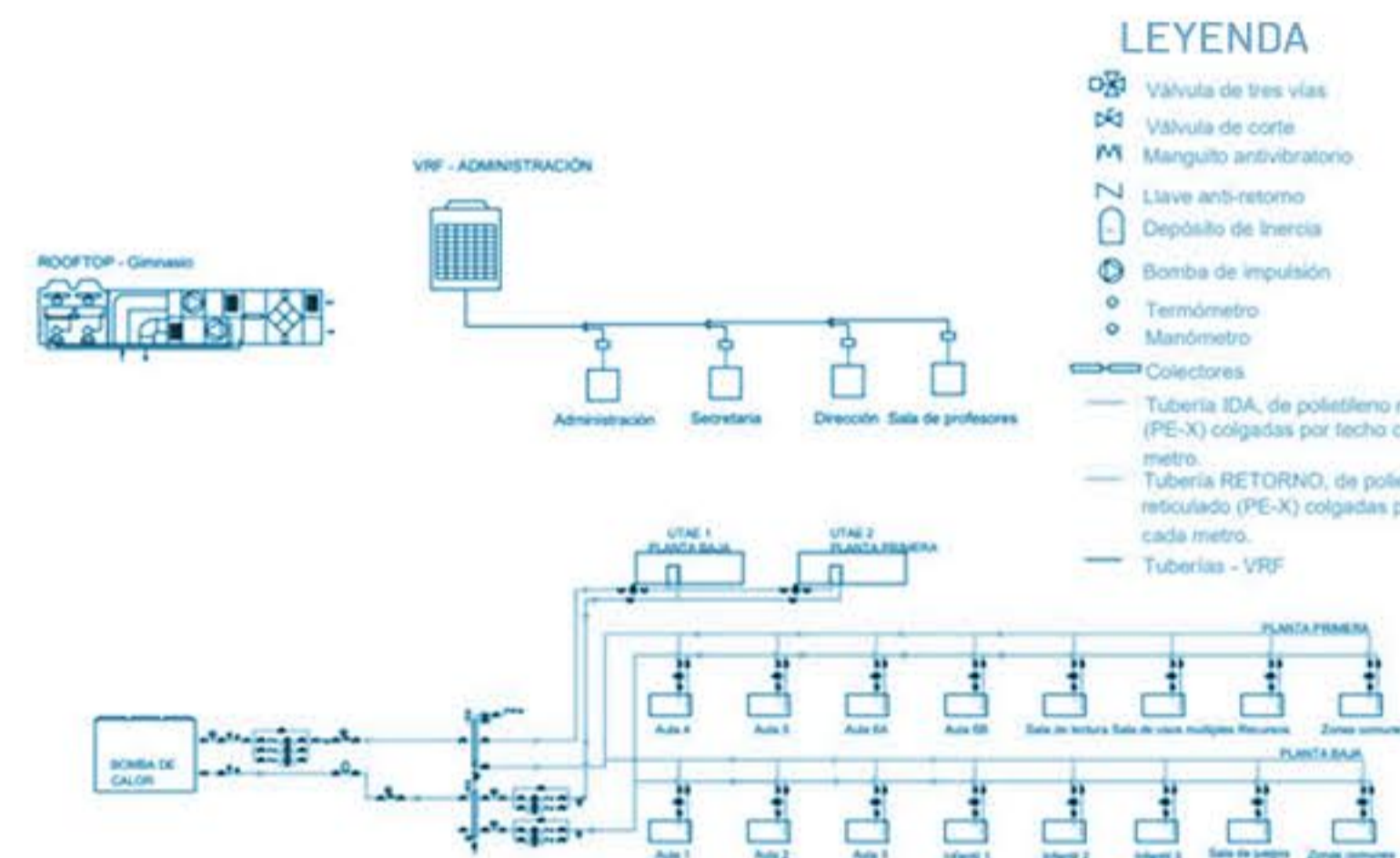
CALIFICACIÓN ENERGÉTICA

ESTADO REFORMADO REHABILITACIÓN ENERGÉTICA

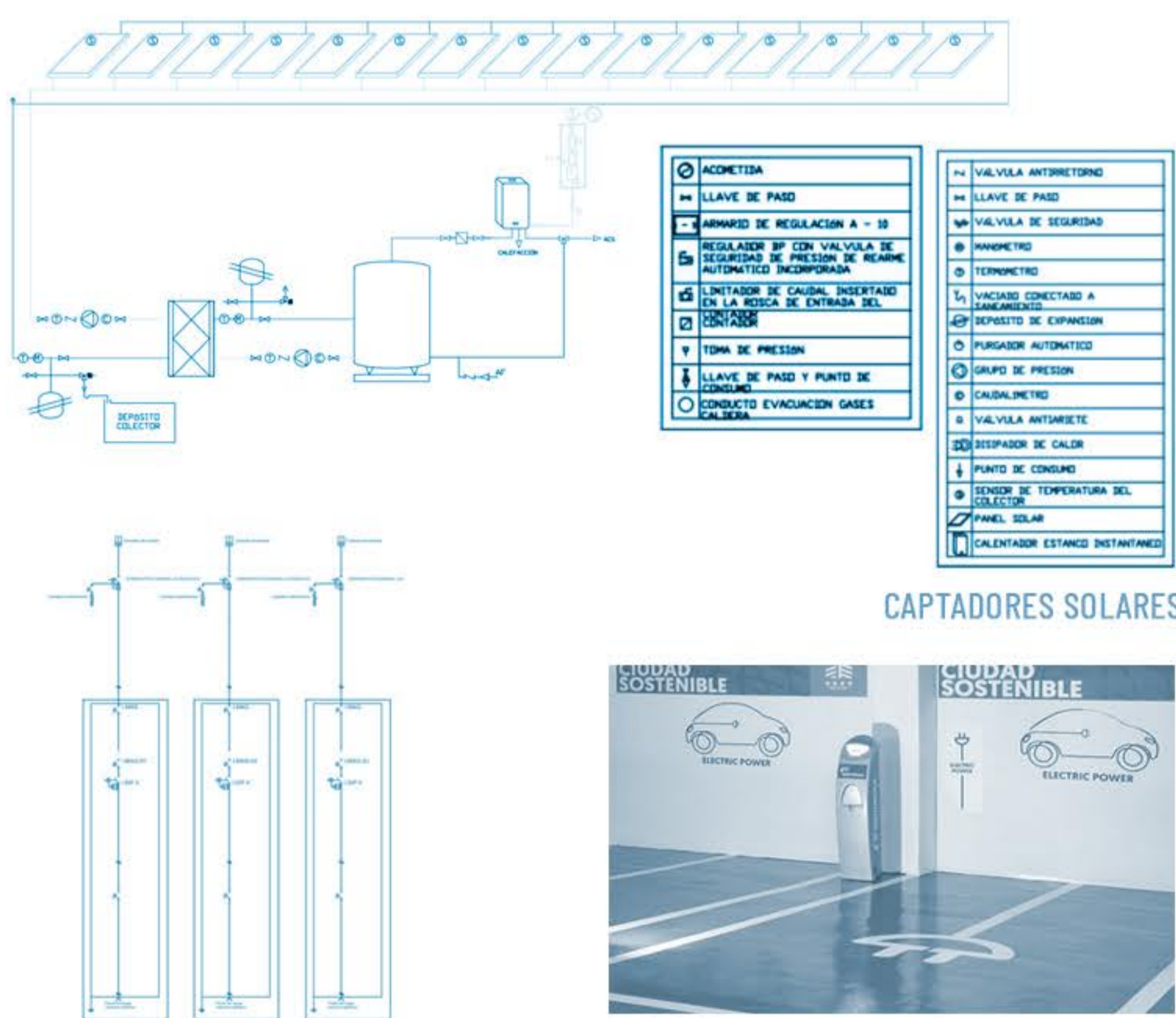


TRATAMIENTO EN CERRAMIENTO, CUBIERTA Y HUECOS

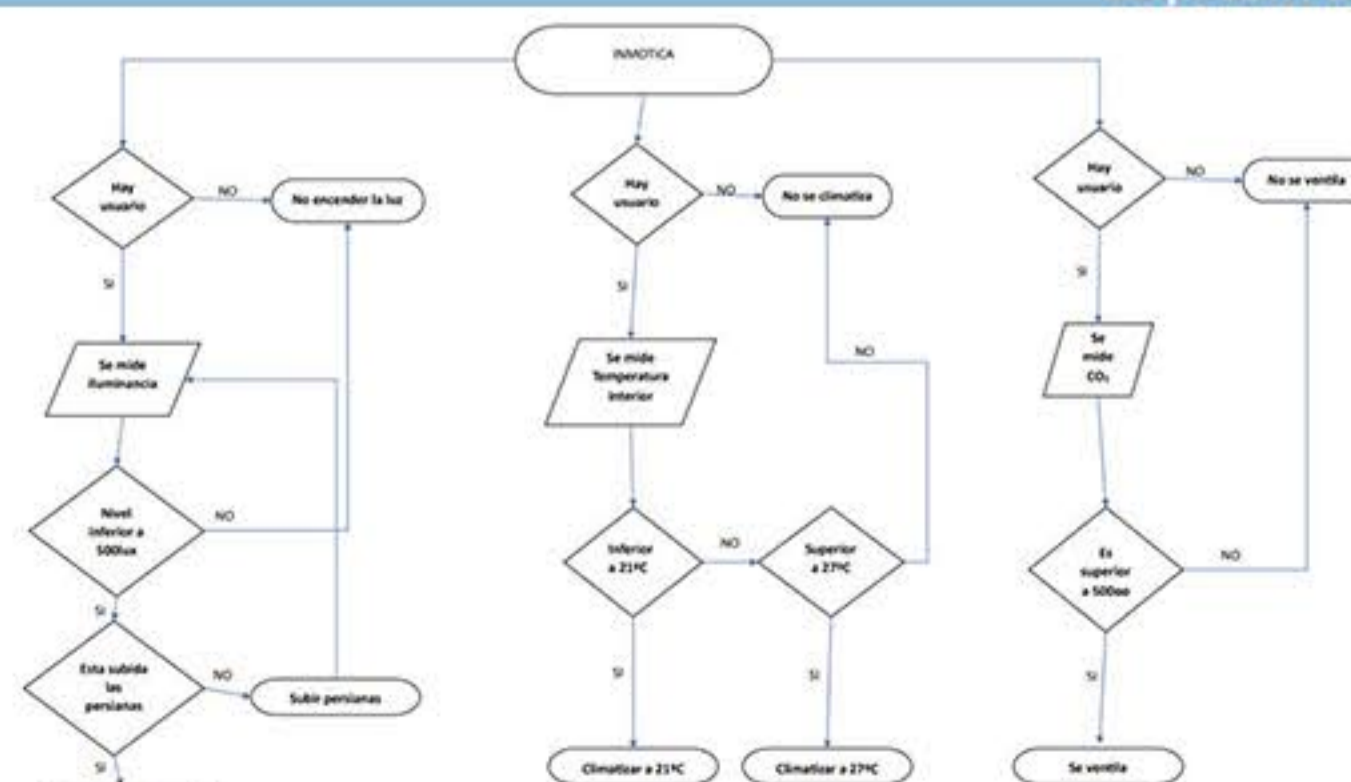
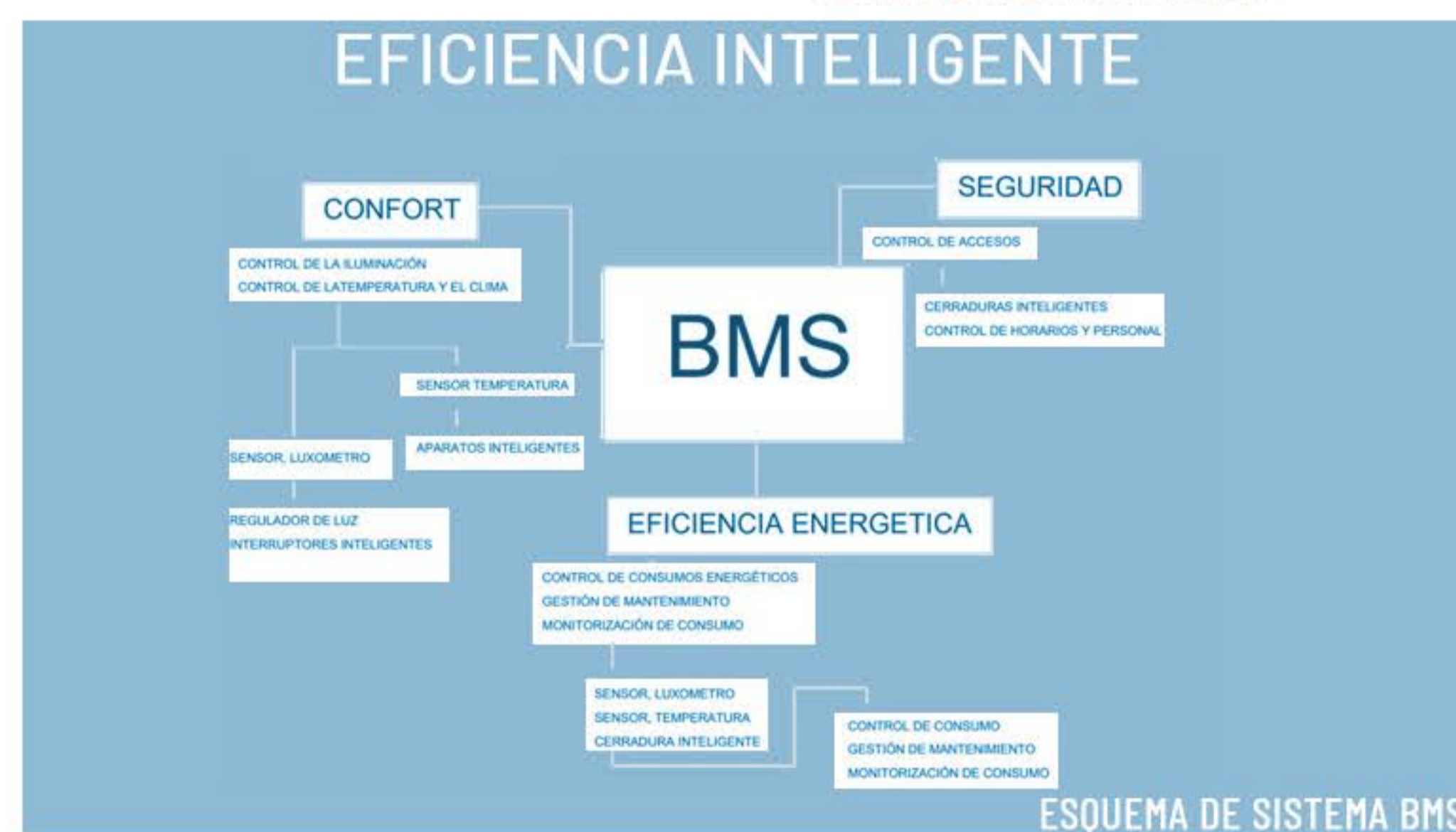
CLIMA Y VENTILACIÓN



ENERGÍAS RENOVABLES



EFICIENCIA INTELIGENTE



CALIFICACIÓN FINAL

